

The EPS-WG is an incremental shaft encoder in mechanical durable quality, particularly suitable in connection with our programmable electronic sequential logic controller EPRS.



- Push-pull outputs
- outputs absolutely short circuit proof and protected against wrong polarity
- direct connection at EPR16S, EPR48S
- 2 clock signals, 1 zero signal
- mechanical very solid

Two 90° phase-shifted clock signals are available as output signals as well as a zero signal. The direction of rotation is recognized by the phaseshifted clock signals, the zero signal serves as the point of reference, which synchronizes the controller after each full revolution with the shaft encoder. As a standard the shaft encoder is delivered with 180 pulses/revolution.

Due to the pulse doubling in our programmable electronic sequential logic controllers a resolution of 1° can be achieved. Other pulse numbers are available on request.

The code disc is scanned opto-electronically, contactlessly and wear-free. All output signals are absolutely short circuit proof and protected against wrong polarity. Each connection can be put to each potential of supply voltage, without to destroy a component. The push-pull output stage of the individual channels permits a switching of the load to the supply voltage or to 0V.

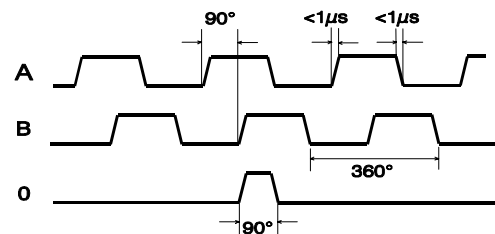
Due to the ball bearing shaft and durable mechanical structure the shaft encoder is suitable even for high revolutionspeed.

Suitable connecting cables or couplings are also available.

Pin assignment EPS-WG2

Pin 12pol EPS-WG	Pin 25pol EPRS	Signal	Cable colour
3	15	Zero (0)	white
5	2	Tact1 (A)	yellow
8	20	Tact2 (B)	rose
10	1,14	0V	blue
12	13,25 case	+10...30V PE	red

The cable color refers to the cables supplied by us. PE is grounded on one side.



Pulse diagram

Specifications

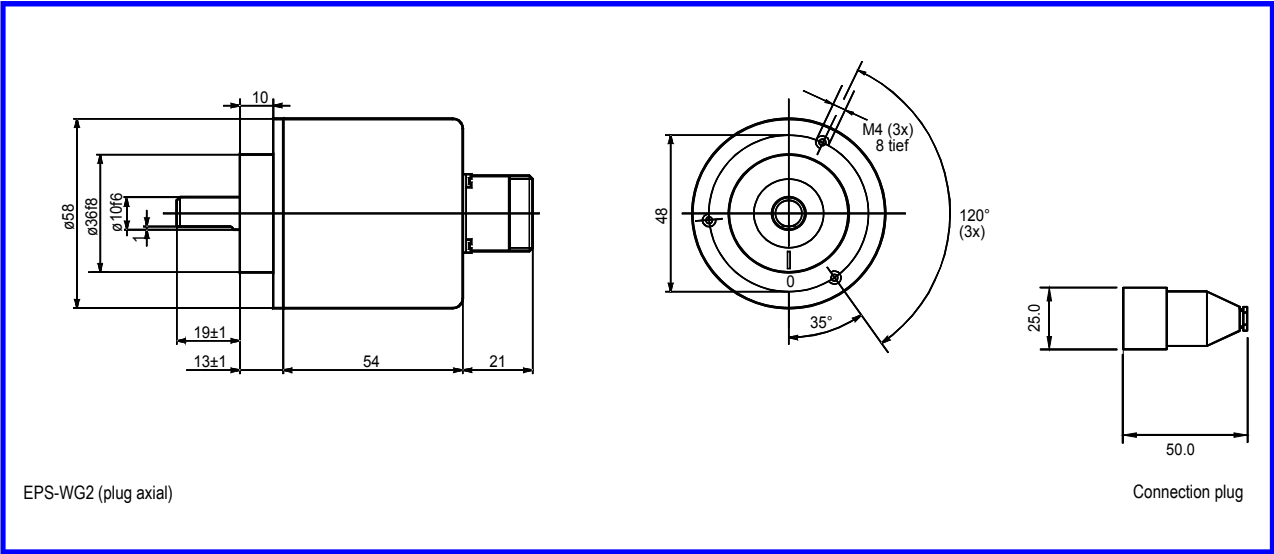
Supply voltage	DC 10-30V
Power consumption without load	120mA
Outputs	20mA, short circuit proof
Pulse frequency	max. 20 kHz
Vibration	100m/s ² (100Hz sinusoidal)
Permissible number of revolutions	6000 r.p.m
Permissible acceleration	2000m/s ²
Protection	IP65
Connection	Plug connector IP54
Temperature range	0 - 55°C
Weight	approx. 300g

Order-No	Type
585490	EPS-WG2 180 pulses/revolution, 360 or 500 on request
585497	Cable 5m EPS-WG2 with plug
585498	Each additional meter cable
585470	Coupling WGK, length 32mm

2



Incremental Shaft Encoder EPS-WG



Flexible coupling WGK

High precision coupling with almost unlimited life expectancy and outstanding kinematic characteristics. They protect the ZANDER shaft encoders reliably from unwanted radial – and axial shocks/vibrations.

WGK can be used up to 25000 r.p.m. and outlasts an almost unlimited number of misalignment load cycles.



Specifications	
Dimension	L = 32,1mm, L1 = 10,0mm
Drillings	B1/B2 = 10mm
Mass-moment of inertia	80kgm ² x10 ⁻⁷
Impact moment	5,6Nm
Max. wave misalignment	angular +/- 3°; radially +/- 0,2mm; axially +/- 0,2mm
Weight	52g

